

Central control system

User manual

Contents

| | |
|--------------------------------|-----------|
| Editing status..... | 7 |
| Adding page..... | 8 |
| Page name modification..... | 8 |
| Background modification..... | 8 |
| Delete page..... | 9 |
| Page switching..... | 9 |
| Add group..... | 9 |
| Modify group name..... | 10 |
| Coordinate modification..... | 10 |
| Button style modification..... | 10 |
| Command interval..... | 11 |
| Attribute hiding..... | 12 |
| New command..... | 12 |
| Command settings..... | 12 |
| Delete command or group..... | 13 |
| Button alignment..... | 14 |
| Add background image..... | 14 |
| Central control status..... | 15 |
| Button control..... | 15 |
| Command settings..... | 16 |
| Modify scheduled command..... | 17 |
| Delete scheduled command..... | 17 |
| Add scheduled task..... | 18 |
| Update scheduled task..... | 18 |
| Add counting task..... | 19 |
| Set the played time to 0..... | 错误！未定义书签。 |
| Refresh task list..... | 20 |
| Delete selected items..... | 错误！未定义书签。 |
| Data Query..... | 20 |
| View aggregated data..... | 21 |
| Query..... | 21 |
| Export..... | 21 |
| Server list operations..... | 23 |
| Adding servers..... | 23 |
| Add group..... | 24 |
| Delete group..... | 24 |
| Delete server..... | 25 |
| View & Update..... | 25 |
| IP Display & Hide..... | 25 |
| Rename groups and servers..... | 26 |
| Expand disk..... | 26 |
| Rescan..... | 27 |
| Upload to source..... | 27 |

| | |
|------------------------------------|------------|
| Upload to target..... | 28 |
| Create folder..... | 28 |
| Delete folder..... | 29 |
| Rename file or folder..... | 29 |
| Source server operations..... | 29 |
| Connect to the source server..... | 30 |
| Refresh..... | 30 |
| Download files to local..... | 31 |
| Create folders..... | 31 |
| Create folder and enter..... | 31 |
| Delete files or folders..... | 32 |
| Rename files or folders..... | 32 |
| Disconnect..... | 33 |
| Target terminal operations..... | 33 |
| Transfer to target terminals..... | 34 |
| File Transfer: Skip Same Name..... | 35 |
| Retry on failure..... | 36 |
| Stop service..... | 36 |
| Boot up..... | 错误! 未定义书签。 |
| Language selection..... | 37 |
| Help..... | 37 |

1. Feature introduction

The central control system of Shengong is a programmable central control system, allowing users to define their own control commands. Classified by command functions: keyboard commands, software execution commands, power on/off commands, serial port commands, file transfer and synchronization, and other software commands without passwords. Command execution modes: real-time and scheduled. Transmission protocols: UDP and TCP. The control terminal can be a computer where the control system is installed, or mobile phones, tablets, or another computer within the same local area network (LAN) as the aforementioned computer. The Android system has a central control software, and other system devices can be controlled by connecting to the central control system server through a web browser. All commands can only be set on the central control server.

2. Running installation environment

Minimum system requirements: Windows 10 64-bit.

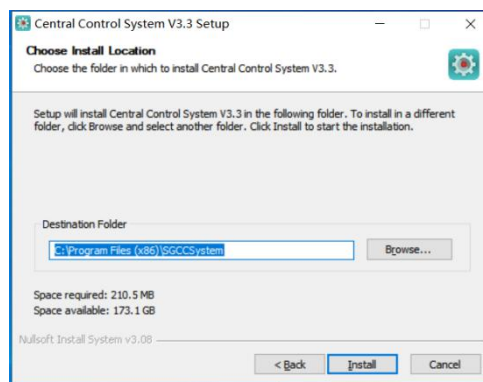
Component requirements: 64-bit VC++2015 library.

3. Installation

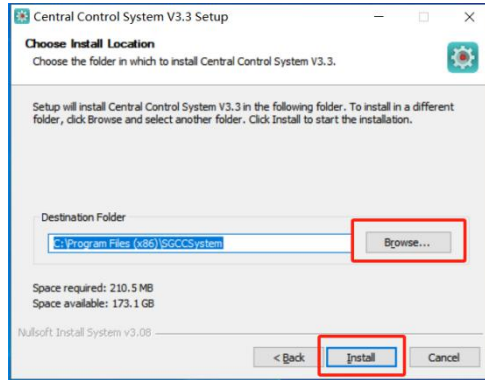
Double-click the central control system installation package to enter the installation wizard interface.



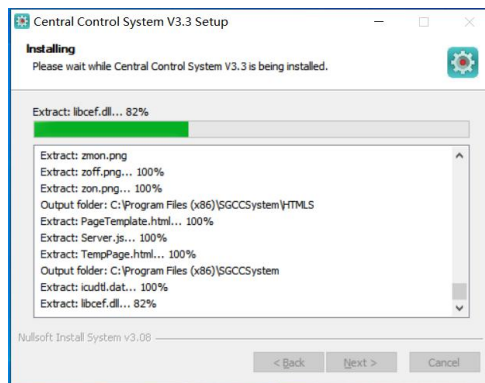
Click "Next" to proceed with the installation procedure.



To change the installation directory, click "Browse" to specify a new installation directory. With the default installation directory, click "Install" to proceed with the installation procedure.



Then wait for the software to install it.



Finally, click Finish to complete the installation. Check the "Run Central Control System" checkbox to automatically launch the software.



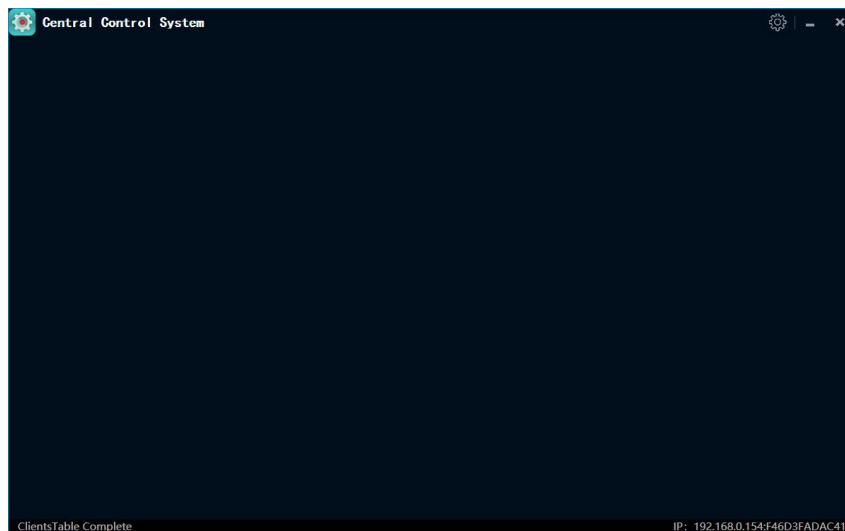
Upon first launch, a registration page will appear. Enter the registration code and click "Register" to complete the software registration.



After successful registration, a prompt saying "Registration Successful! Please restart the program" will appear. Click "OK" to proceed.



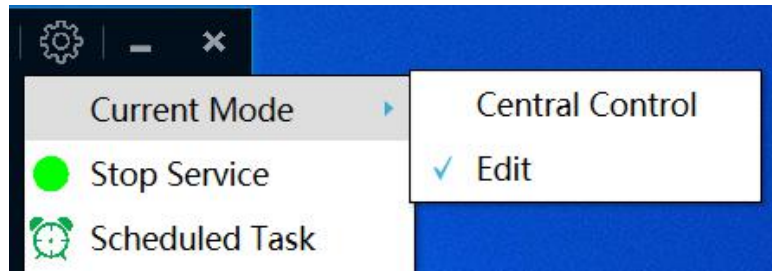
Then reopen the software, and it will default to the central control status page, but it will be empty. You will need to manually add content.



4. Current status

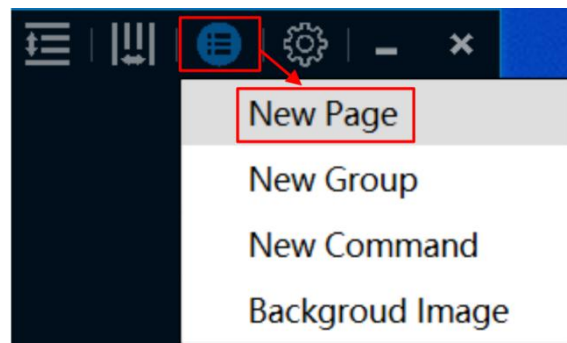
Editing status

Click the "Settings icon" >> "Current Mode" >> "Edit" in the upper right corner to enter the editing page.



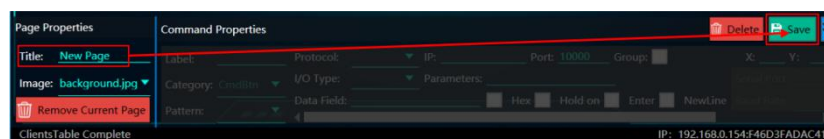
Adding page

Click the "Edit Menu" icon at the top right of the page, then click "New Page" to add a new page. (Tip: If a page has already been added and the name has not been modified, when adding again, it will prompt you to modify the name. Only after modifying the name can you continue to add pages.)



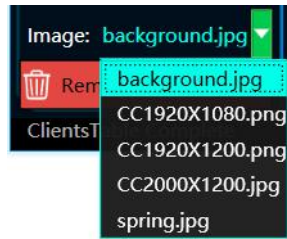
Page name modification

You can modify the page name at the bottom right of the page. After entering the modified name, click the "Save" button at the bottom right of the page to successfully modify the page name.



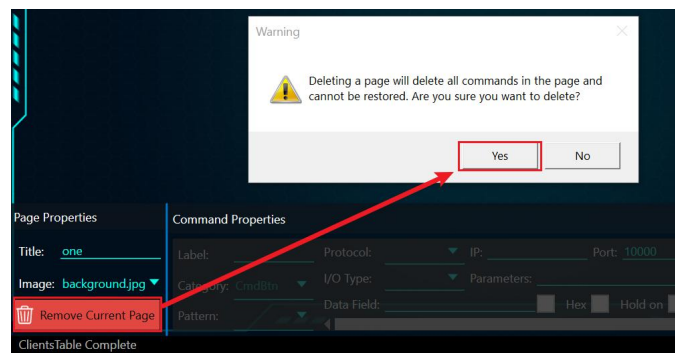
Background modification

Click the "Background" drop-down box in the lower right corner, and then you can select the background, and click the background you want to change to modify it successfully.



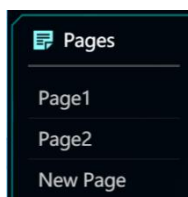
Delete page

Click the "Delete this page" button in the lower right corner to pop up a second confirmation pop-up, and finally click "Yes" to delete this page. (Tip: Deletion is not available if there is only one page.)



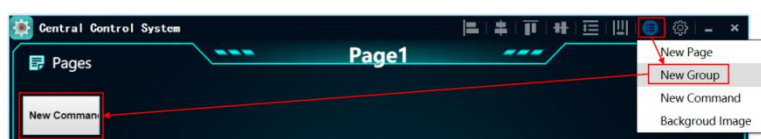
Page switching

Click "Pages" in the upper left corner, a page overview will pop up on the left side. Then, click the page you want to switch to, to successfully switch. If you don't want to switch pages, click the "Page" button again to hide the page overview.



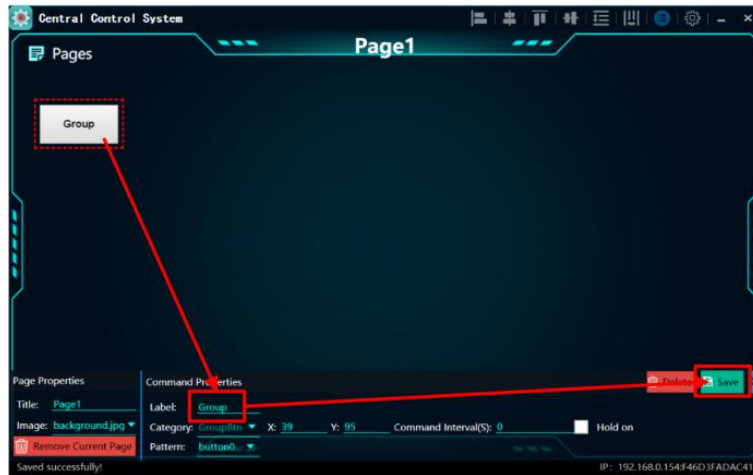
Add group

Click the "Edit Menu" icon at the top right, and then click "New Group" to add a new group to the page. This function allows you to add multiple commands to a group, and then call the commands by operating the group.



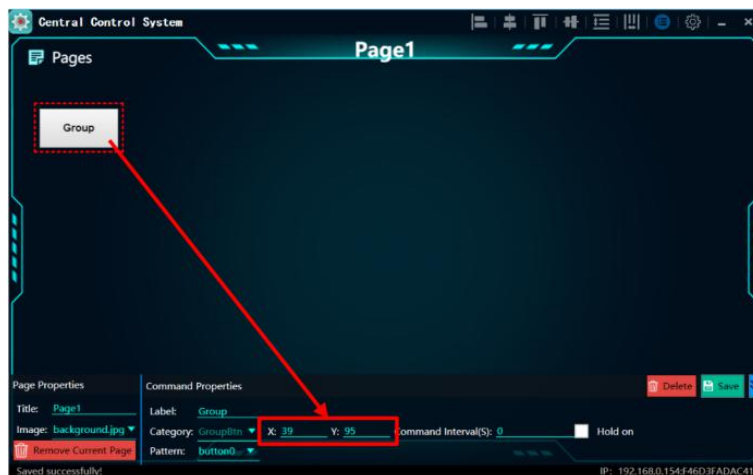
Modify group name

Select the group you want to modify, then edit the name at the button name section below the page, and click "Save" at the bottom right to successfully change the group's name.



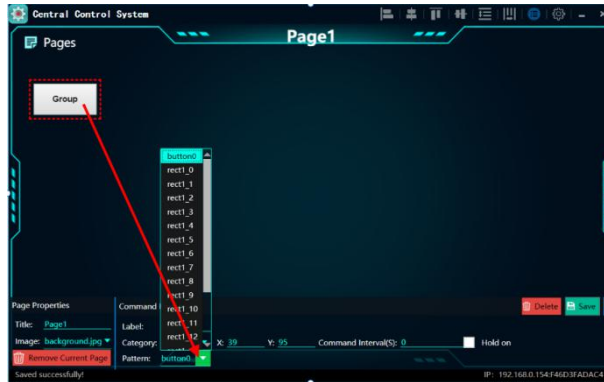
Coordinate modification

Click the group button and then modify the X and Y values at the bottom of the page to change the position of the group on the page. Hold down the left mouse button to move the mouse button, and you can also modify the coordinates of the button.



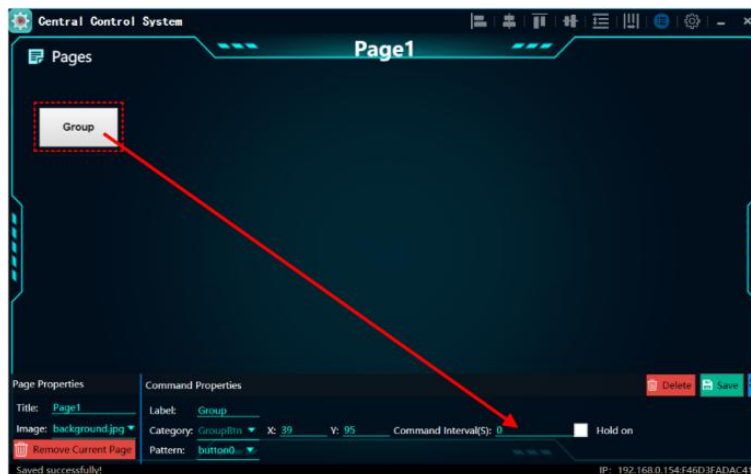
Button style modification

Click on the group button, then click on the "Button Type" drop-down list, and finally select the type of button according to your needs.

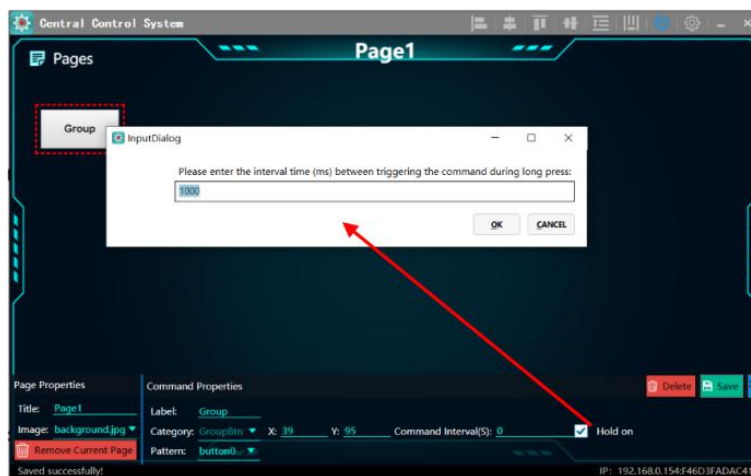


Command interval

After adding multiple commands to the group, then enter the time between command executions, and then click on the group in central control mode, it will jump to the next command after the set time, until all the commands in the group are executed.

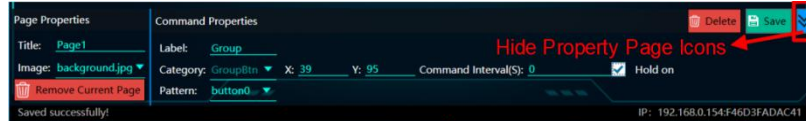


Tick the "Hold on" checkbox to pop up the time information of the long press, and enter the time according to your needs to jump the command after the long press.



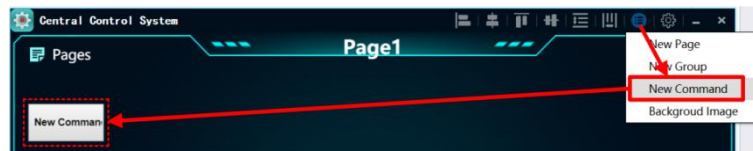
Attribute hiding

Click the "Hide" icon at the bottom right of the page to hide the page properties and command attributes, and click the icon again to re-display them.

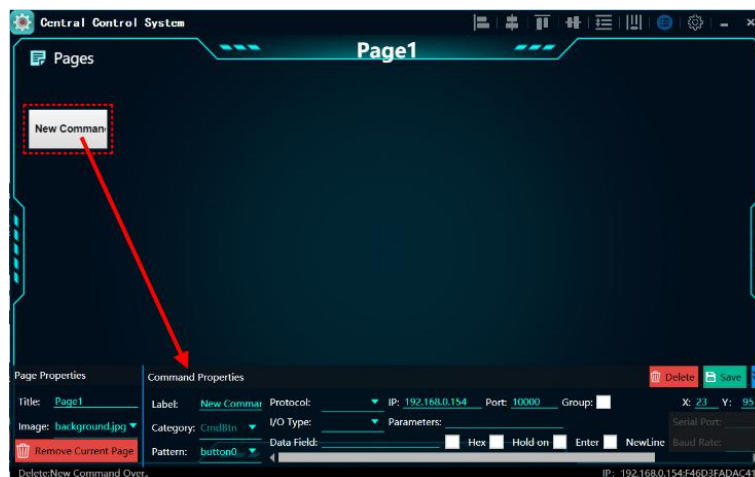


New command

Click "Edit Menu" at the top right of the page, and then click "New Command" to add a new command.



After clicking the command button, the command properties page will pop up at the bottom of the page.

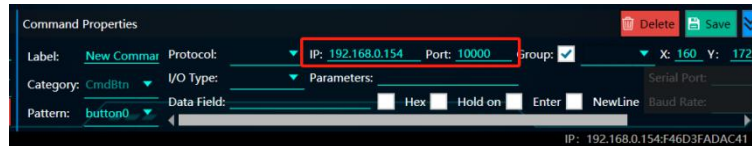


Command settings

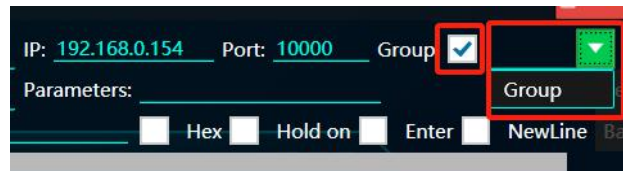
After clicking on the desired command, you can configure it in the command attribute section. There are three types of send options: WAKE, TCP, UDP. Click on the dropdown list of the send type to select the desired send type.



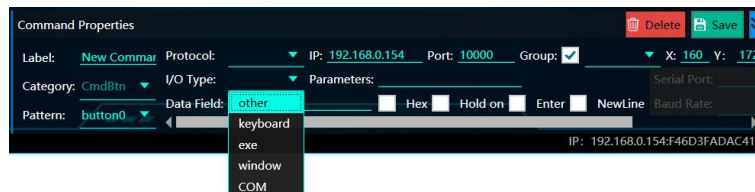
Then, enter the target IP and port number.



If you want to add this command to a group, select the "Add to Group" check box, and then select the group.



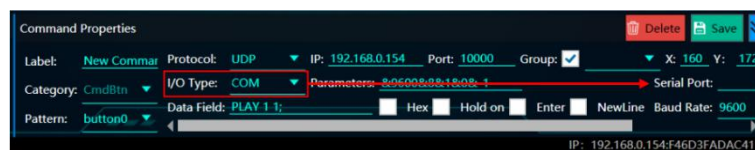
Select the type of command to be sent, click the command type drop-down list, you can select according to your needs, a total of 5 different command types are supported. (Note: If you want to control the broadcast control system, you need to select the other command type).



Enter the command and command parameters, then click "Save" to set the command successfully. If there are no command parameters, do not add them. Generally, commands have no parameters. You can also set the format of the command sending, supporting 4 different formats such as Hex, Hold on, Enter, and New Line. To set, check the checkbox in front of the desired format.

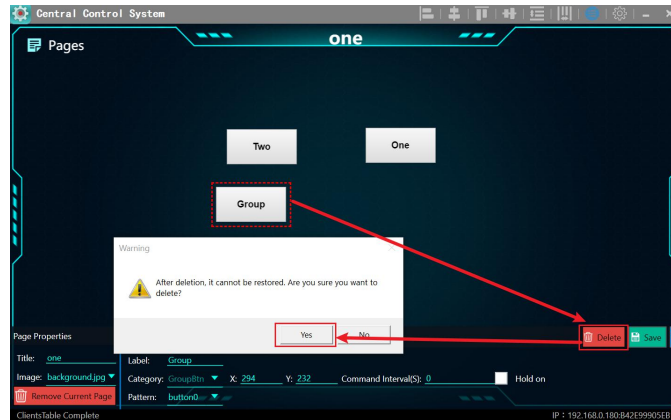


(Note: The string slogan and other information in the lower right corner of the page can only be set when the command type is window, and other command types cannot be operated.)



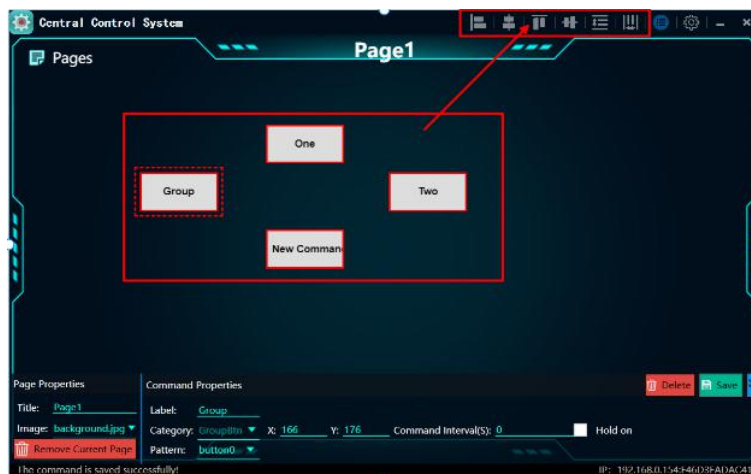
Delete command or group

Click the command button or group button, and then click the "Delete icon" at the bottom right of the page. A confirmation popup will appear, click "Yes" to delete the command or group.



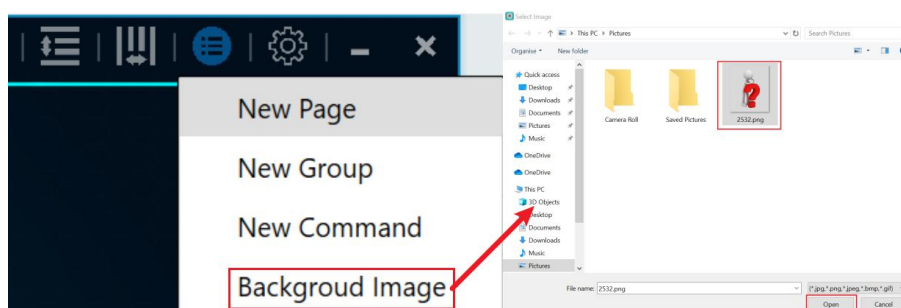
Button alignment

Hold down the "Ctrl" key on the keyboard, then click on the buttons to be aligned, and finally click on the alignment icon at the top of the page as needed.



Add background image

Click on the "Edit Menu" icon at the top right of the page, then click on "Background Image". A window for selecting images will pop up, where you can choose from images on your computer, then click "Open".



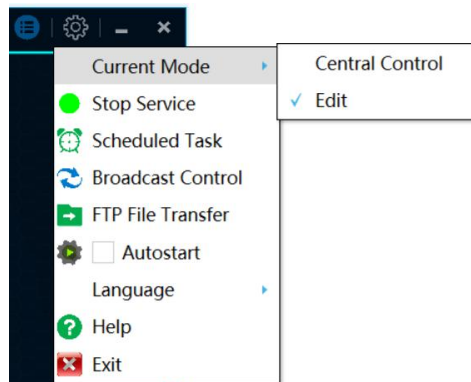
Afterwards, the software will pop up a window indicating that the image has been

successfully loaded. Click "OK", then a second confirmation interface will appear. Click "OK" to add the image successfully. (Tip: After adding an image, you need to restart the system to take effect. You can set the background in the bottom right corner of the page).



Central control status

By default, you can enter the central control status page after opening the software, or you can enter this page by clicking the "Settings Icon" >> "Current Mode" >> "Central Control Status" in the upper left corner of the page.



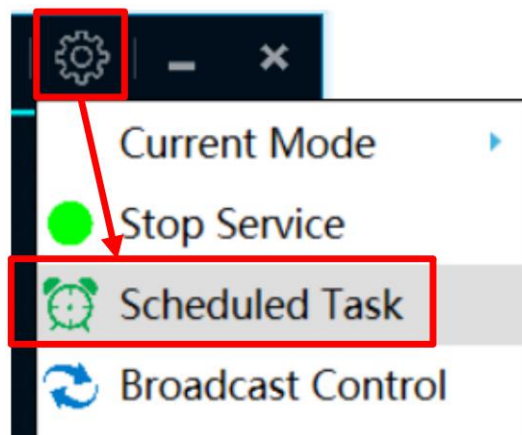
Button control

If you click the button on the central control screen, you can execute the command set by the send button, and if you click the group button, you can execute the command buttons in the group according to the interval set on the edit screen. Click "Pages" in the upper left corner to pop up the preview list, and you can switch between pages.



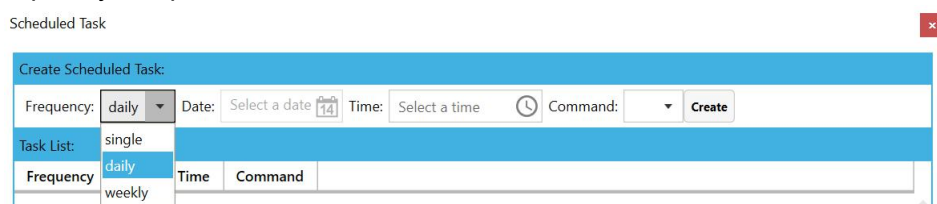
5. Scheduled Task

Click the "Settings icon" in the upper right corner of the page, and then click "Scheduled Task" to enter this page.

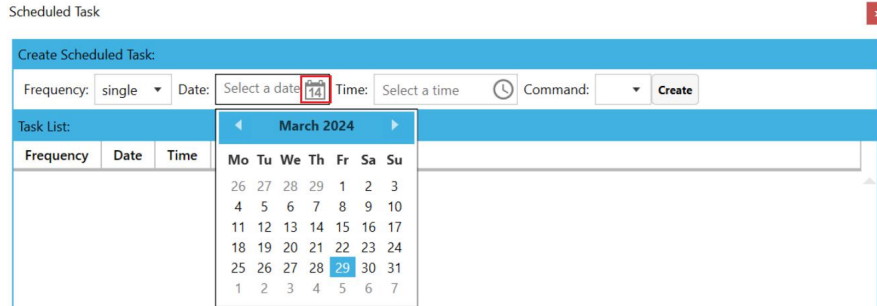


Command settings

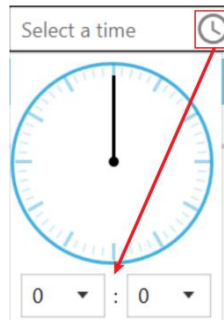
To set up a scheduled task, first add a command on the Edit Status page. Select a timed period (the period is divided into 3 formats, which are daily, weekly, and daily), and click the "Frequency" drop-down list to select it.



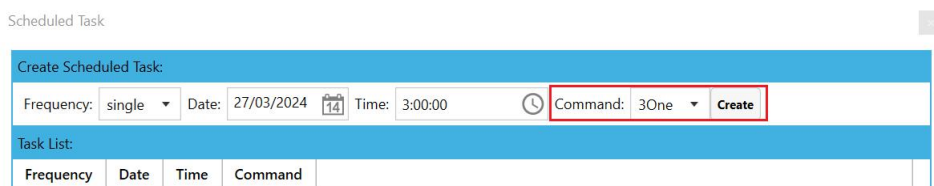
After selecting the period, click on the calendar icon to choose the date. (Note: If the period is set to "single," you can set the date freely. If the period is set to "daily," you cannot set the date. If the period is set to "weekly," you can select the date from Monday to Sunday.)



After selecting the date, set the time, click the clock icon to pop up the setting page, and set the time according to your needs.

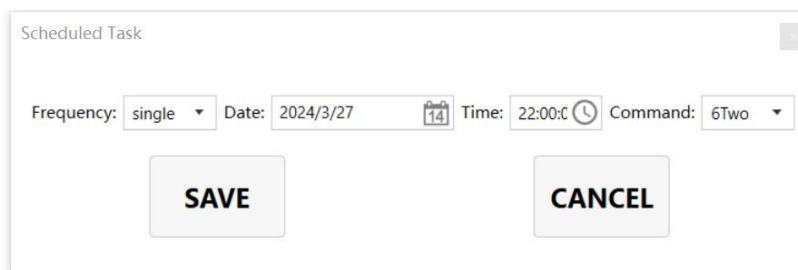


Finally, click the "Command" drop-down list to select the command, and click "Creat" to complete the addition of the scheduled command, and the command can be automatically sent when the set time is reached.



Modify scheduled command

Double-click on the scheduled command to open the modification popup. Then, make the necessary modifications to the scheduled task. Finally, click on the "Save" icon at the bottom right corner to successfully save the changes.



Delete scheduled command

Right-click on the command to be deleted, then click on "Remove Selection" to remove

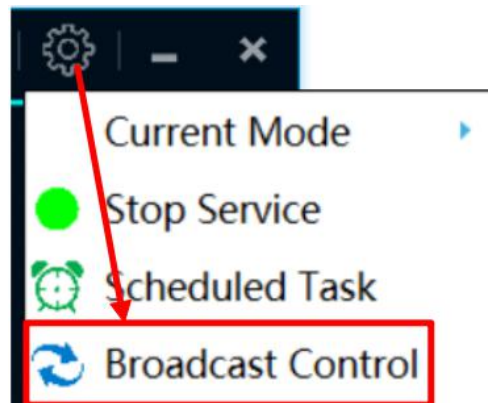
the scheduled command.

| Task List: | | | |
|------------|-----------|-------|---------|
| Frequency | Date | Time | Command |
| single | 2024/3/27 | 22:00 | Two |

Remove Selection

6. Broadcast control settings

Click the "Settings icon" in the upper right corner of the page, and then click "Broadcast Control" to enter this page.



Add scheduled task

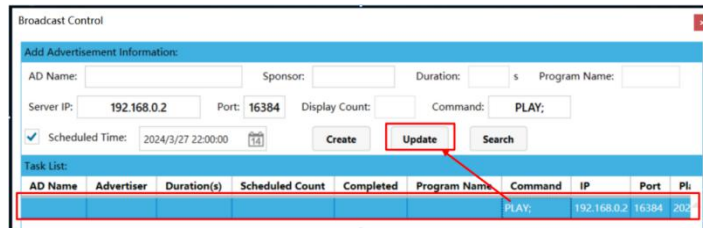
Check the scheduled playback time, select the specific time to send network commands, and add the IP address, port, command, ad name and advertiser (optional) according to the specific requirements. Click "Add" to start the scheduled task if there is no error.

The image shows the 'Broadcast Control' interface with the 'Add Advertisement Information' form. The form includes fields for AD Name, Sponsor, Duration, Program Name, Server IP (192.168.0.2), Port (16384), Display Count, and Command (JUMP 1). The Scheduled Time is set to 2024/3/27 22:00:00. The 'Create' button is highlighted with a red box. Red arrows point to the 'Create' button and the 'Scheduled Time' field. Red text annotations provide instructions: 'Must be filled in when adding' points to the 'AD Name' and 'Advertiser' columns in the 'Task List' table, and 'Click "Create" to start the scheduled task if there is no error' points to the 'Create' button.

| AD Name | Advertiser | Duration(s) | Scheduled Count | Completed | Program Name | Command | IP | Port | Planned |
|---------|------------|-------------|-----------------|-----------|--------------|---------|----|------|---------|
|---------|------------|-------------|-----------------|-----------|--------------|---------|----|------|---------|

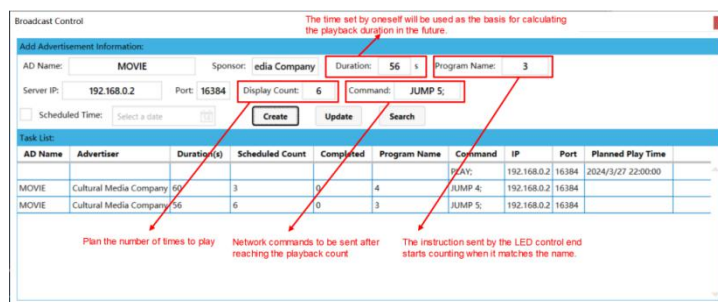
Update scheduled task

Click the scheduled task to be modified, the corresponding data will be displayed in the text. Modify the information as needed, and finally click "Update" to complete the update.



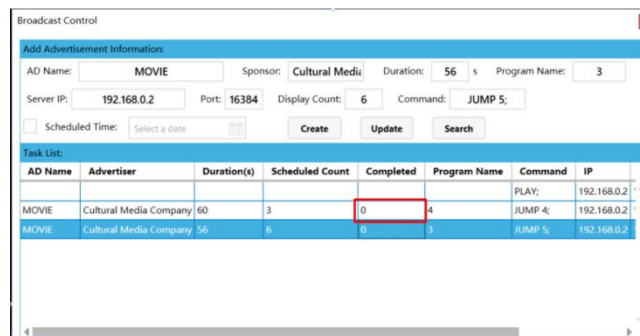
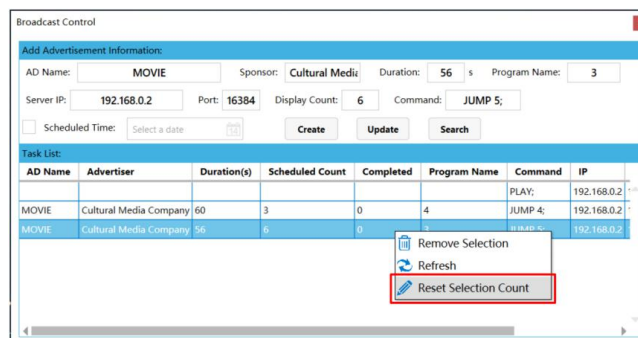
Add counting task

Fill in the advertisement name and advertiser (optional) according to specific requirements. The required fields include advertisement duration, matching program name, IP, port, playback times, and command. After editing, click "Creat" to complete the addition.



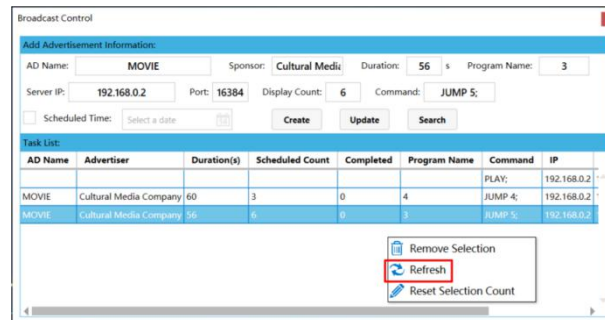
Reset Selection Count

This function can be used when you need to replay the content after changing it. Right-click the mouse and select "Reset Selection Count" to reset the count for this task.



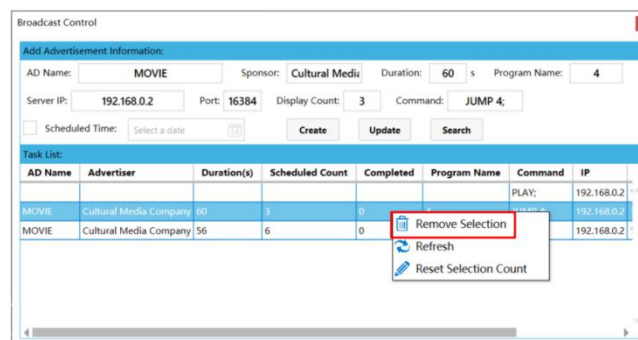
Refresh task list

Right-click and click Refresh to refresh this task list.



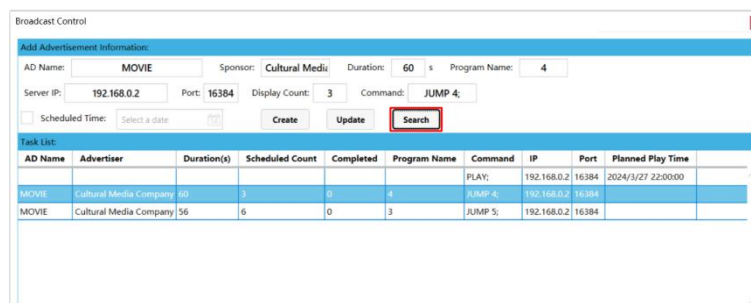
Remove Selection

Right-click the task you want to delete and click "Remove Selection" to complete the deletion.



Data Query

Click the "Search" button to enter the data query page.



This page displays specific information about each completed playback.

导出

条件筛选

选择筛选条件:

选择时间段: —

数据详情 数据汇总

| ID | 广告主 | 广告名称 | 广告时长(单位:秒) | 计划播放时间 | IP | 匹配节目名 | 第几次完成播放 | 播放完成时间 |
|----|------|------|------------|---------------------|--------------|-------|---------|---------------------|
| 1 | | | | 2023-07-10 16:33:00 | 192.168.0.39 | | | |
| 2 | 科技公司 | 宣传片 | 7 | | 192.168.0.39 | 2 | 1 | 2023-07-10 16:33:05 |
| 3 | 科技公司 | 宣传片 | 7 | | 192.168.0.39 | 2 | 2 | 2023-07-10 16:33:09 |
| 4 | 科技公司 | 宣传片 | 7 | | 192.168.0.39 | 2 | 3 | 2023-07-10 16:33:15 |
| 5 | 科技公司 | 宣传片 | 7 | | 192.168.0.39 | 2 | 4 | 2023-07-10 16:33:20 |
| 6 | 科技公司 | 宣传片 | 7 | | 192.168.0.39 | 2 | 5 | 2023-07-10 16:33:25 |
| 7 | 科技公司 | 宣传片 | 7 | | 192.168.0.39 | 2 | 6 | 2023-07-10 16:33:30 |
| 8 | 茶叶公司 | 纪录片 | 15 | | 192.168.0.39 | 3 | 1 | 2023-07-10 16:33:36 |
| 9 | 茶叶公司 | 纪录片 | 15 | | 192.168.0.39 | 3 | 2 | 2023-07-10 16:33:42 |

View aggregated data

Click on "Data Summary" to display the completed task data.

导出

条件筛选

选择筛选条件:

选择时间段: —

数据详情 数据汇总

| ID | 广告主 | 广告名称 | 广告时长(单位:秒) | 已播放次数 | 已播放时长(单位:秒) | 播放完成时间 | IP | 匹配节目名 |
|----|--------|------|------------|-------|-------------|---------------------|--------------|-------|
| 7 | 科技公司 | 宣传片 | 7 | 6 | 42 | 2023-07-10 16:33:30 | 192.168.0.39 | 2 |
| 11 | 茶叶公司 | 纪录片 | 15 | 4 | 60 | 2023-07-10 16:33:55 | 192.168.0.39 | 3 |
| 14 | 文化传播公司 | 电影 | 60 | 3 | 180 | 2023-07-10 16:34:11 | 192.168.0.39 | 4 |

Query

Data can be filtered based on criteria such as advertiser name, ad name, ad duration (unit: seconds), time period, etc. When you select Advertiser and Ad Name, enter the first few characters to query the corresponding data, for example:

导出

条件筛选

选择筛选条件: 广告主

选择时间段: —

数据详情 数据汇总

| ID | 广告主 | 广告名称 | 广告时长(单位:秒) | 计划播放时间 | IP | 匹配节目名 | 第几次完成播放 | 播放完成时间 |
|----|--------|------|------------|--------|--------------|-------|---------|---------------------|
| 4 | 科技公司 | 宣传片 | 7 | | 192.168.0.39 | 2 | 3 | 2023-07-10 16:33:15 |
| 5 | 科技公司 | 宣传片 | 7 | | 192.168.0.39 | 2 | 4 | 2023-07-10 16:33:20 |
| 6 | 科技公司 | 宣传片 | 7 | | 192.168.0.39 | 2 | 5 | 2023-07-10 16:33:25 |
| 7 | 科技公司 | 宣传片 | 7 | | 192.168.0.39 | 2 | 6 | 2023-07-10 16:33:30 |
| 8 | 茶叶公司 | 纪录片 | 15 | | 192.168.0.39 | 3 | 1 | 2023-07-10 16:33:36 |
| 9 | 茶叶公司 | 纪录片 | 15 | | 192.168.0.39 | 3 | 2 | 2023-07-10 16:33:42 |
| 10 | 茶叶公司 | 纪录片 | 15 | | 192.168.0.39 | 3 | 3 | 2023-07-10 16:33:49 |
| 11 | 茶叶公司 | 纪录片 | 15 | | 192.168.0.39 | 3 | 4 | 2023-07-10 16:33:55 |
| 12 | 文化传播公司 | 电影 | 60 | | 192.168.0.39 | 4 | 1 | 2023-07-10 16:34:00 |

There are three advertiser information, enter "Technology" and click on "Query":

导出

条件筛选

选择筛选条件: 广告主

选择时间段: —

数据详情 数据汇总

| ID | 广告主 | 广告名称 | 广告时长(单位:秒) | 计划播放时间 | IP | 匹配节目名 | 第几次完成播放 | 播放完成时间 |
|----|------|------|------------|--------|--------------|-------|---------|---------------------|
| 2 | 科技公司 | 宣传片 | 7 | | 192.168.0.39 | 2 | 1 | 2023-07-10 16:33:05 |
| 3 | 科技公司 | 宣传片 | 7 | | 192.168.0.39 | 2 | 2 | 2023-07-10 16:33:09 |
| 4 | 科技公司 | 宣传片 | 7 | | 192.168.0.39 | 2 | 3 | 2023-07-10 16:33:15 |
| 5 | 科技公司 | 宣传片 | 7 | | 192.168.0.39 | 2 | 4 | 2023-07-10 16:33:20 |
| 6 | 科技公司 | 宣传片 | 7 | | 192.168.0.39 | 2 | 5 | 2023-07-10 16:33:25 |
| 7 | 科技公司 | 宣传片 | 7 | | 192.168.0.39 | 2 | 6 | 2023-07-10 16:33:30 |

Export

Click the "Export" button to export the current data list to an Excel spreadsheet, and

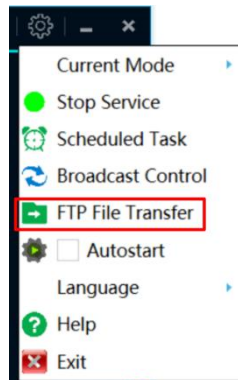
calculate the total playback duration (unit: seconds).



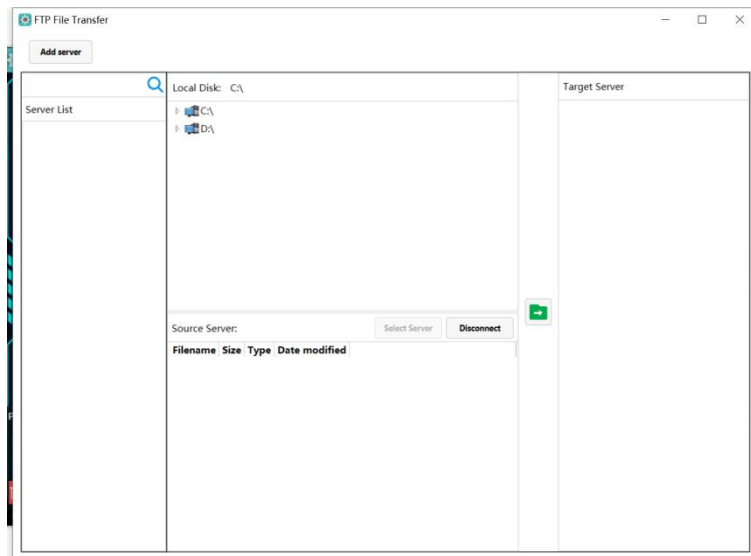
| ID | 广告主 | 广告名称 | 广告时长(单位:秒) | 计划播放时间 | IP | 匹配节目名 | 第几次完成播放 | 播放完成时间 |
|----|--------|------|------------|---------------------|--------------|-------|---------|---------------------|
| 1 | | | | 2023-07-10 16:33:00 | 192.168.0.39 | | | |
| 2 | 科德公司 | 宣传片 | 7 | | 192.168.0.39 | 2 | 1 | 2023-07-10 16:33:05 |
| 3 | 科德公司 | 宣传片 | 7 | | 192.168.0.39 | 2 | 2 | 2023-07-10 16:33:09 |
| 4 | 科德公司 | 宣传片 | 7 | | 192.168.0.39 | 2 | 3 | 2023-07-10 16:33:15 |
| 5 | 科德公司 | 宣传片 | 7 | | 192.168.0.39 | 2 | 4 | 2023-07-10 16:33:20 |
| 6 | 科德公司 | 宣传片 | 7 | | 192.168.0.39 | 2 | 5 | 2023-07-10 16:33:25 |
| 7 | 科德公司 | 宣传片 | 7 | | 192.168.0.39 | 2 | 6 | 2023-07-10 16:33:30 |
| 8 | 茶叶公司 | 纪录片 | 15 | | 192.168.0.39 | 3 | 1 | 2023-07-10 16:33:36 |
| 9 | 茶叶公司 | 纪录片 | 15 | | 192.168.0.39 | 3 | 2 | 2023-07-10 16:33:42 |
| 10 | 茶叶公司 | 纪录片 | 15 | | 192.168.0.39 | 3 | 3 | 2023-07-10 16:33:49 |
| 11 | 茶叶公司 | 纪录片 | 15 | | 192.168.0.39 | 3 | 4 | 2023-07-10 16:33:55 |
| 12 | 文化传播公司 | 电影 | 60 | | 192.168.0.39 | 4 | 1 | 2023-07-10 16:34:00 |
| 13 | 文化传播公司 | 电影 | 60 | | 192.168.0.39 | 4 | 2 | 2023-07-10 16:34:06 |
| 14 | 文化传播公司 | 电影 | 60 | | 192.168.0.39 | 4 | 3 | 2023-07-10 16:34:11 |

7. FTP file Transfer

Open the central control software, click the settings icon button in the upper right corner, and select "FTP File Transfer" to enter this page.



The page is as follows:



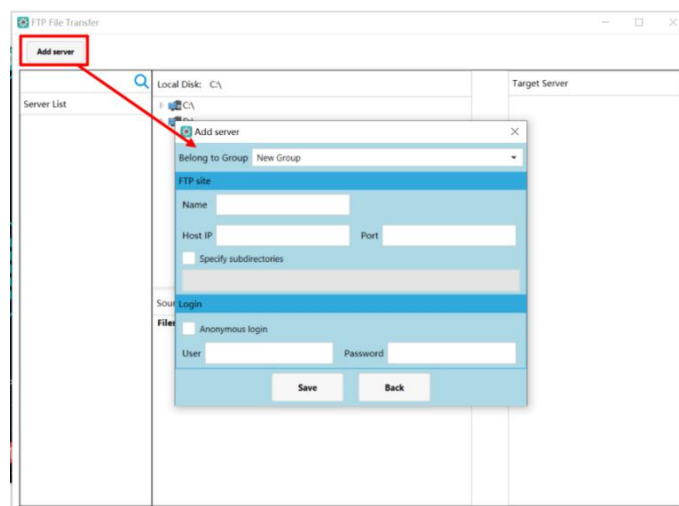
Server list operations

Note: The server list is where all servers are displayed. Here, you can visually see the server groups and all servers included in each group. At the same time, there are some operations available for handling groups and servers, such as adding, deleting, modifying, and querying. The details are as follows:

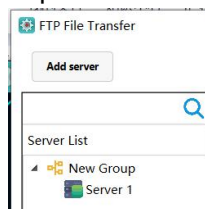
There are two ways to add server groups. The first is to click the "Add Server" button when there are no servers in the server list, which will automatically create a new group. The second is to right-click in the server list and select "Add Group". Similarly, there are two ways to add servers. The first is to click the "Add Server" button to add servers, and the second is to right-click in the server list and select "Add Server".

Adding servers

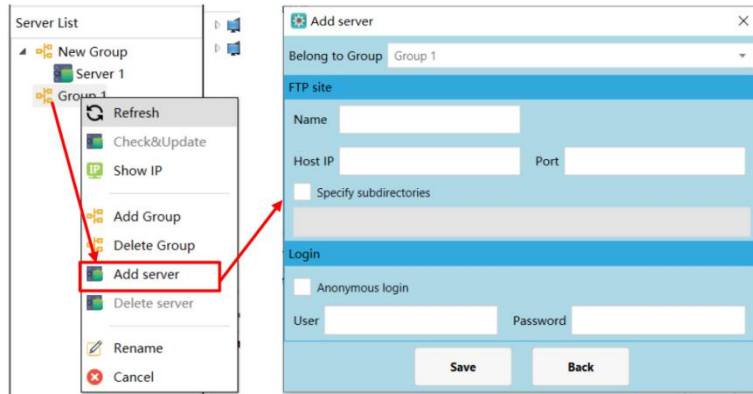
Click the "Add Server" button to add both a group and servers (when there are no servers in the server list). At this time, it will prompt that the server belongs to a "New Group". If groups already exist, you can select the group for the servers as needed.



After adding servers, if there is no group in the server list, a group is created by default.

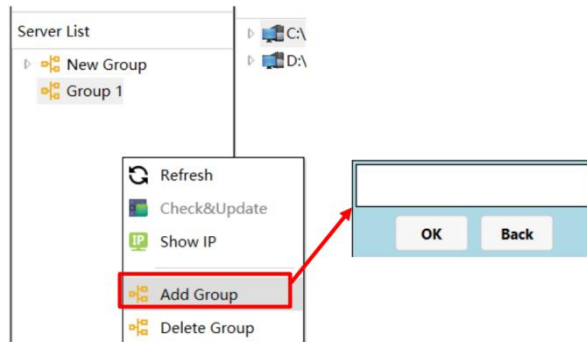


Right-click in the server list and click "Add Server" to pop up the Add page.



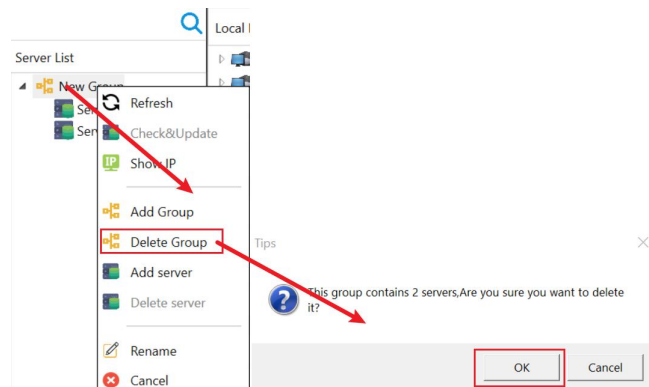
Add group

Right-click the pop-up menu in the server list and select Add Group, enter the group name to create a new group.



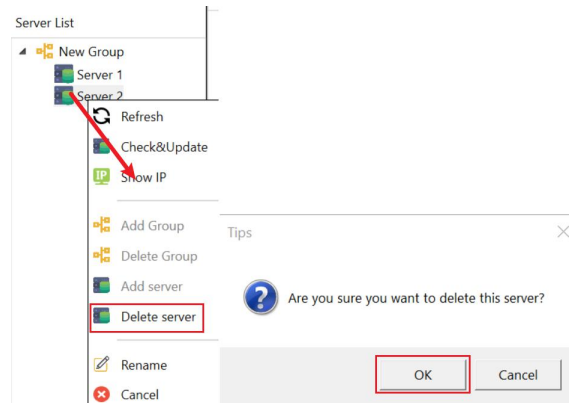
Delete group

After selecting the group you want to delete, select "Delete Group" from the right-click menu, and a second confirmation window will appear, click "OK" to confirm the deletion.



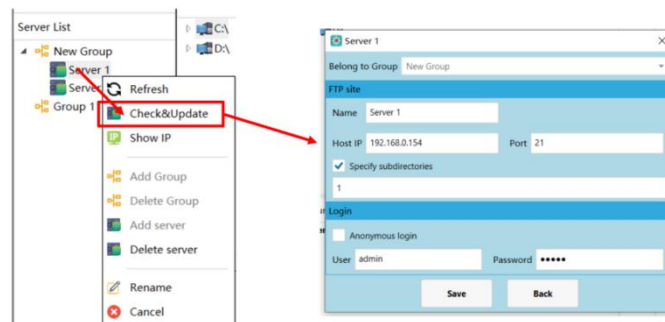
Delete server

After selecting the server(s) you want to delete, right-click to bring up the menu, then choose "Delete Server". A confirmation prompt will appear asking if you are sure you want to delete (the prompt may differ for single and multiple selections). This demonstration shows the deletion of a single server.



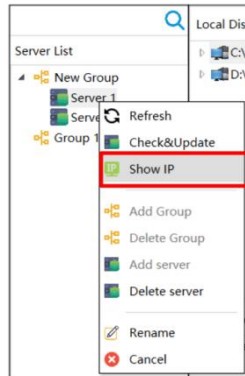
Check & Update

After selecting the servers, right-click to bring up the menu, then choose "Check & Update" to enter the information window. Here, you can make changes to the FTP server information, but you cannot modify the group it belongs to. After making changes, click "Save" to update. Alternatively, click "Return" to cancel any modifications.



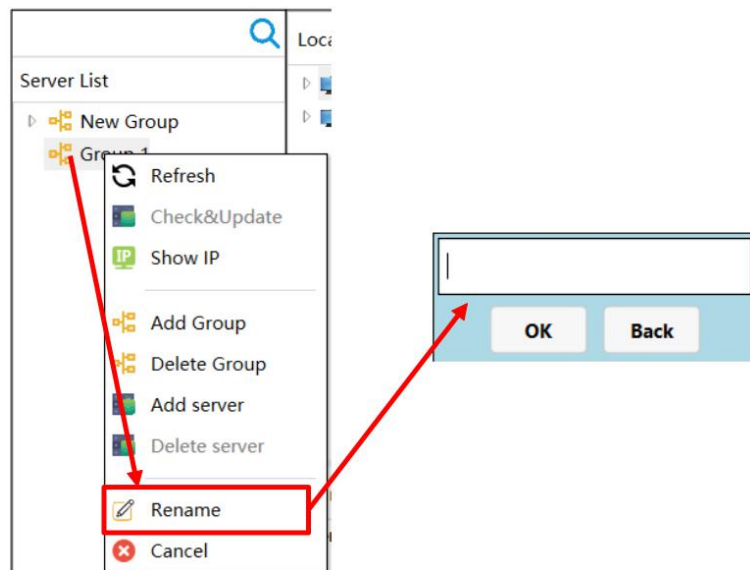
IP Display & Hide

Right-click in the server list area, then click "Show IP" to display the server IP, click again to hide it.



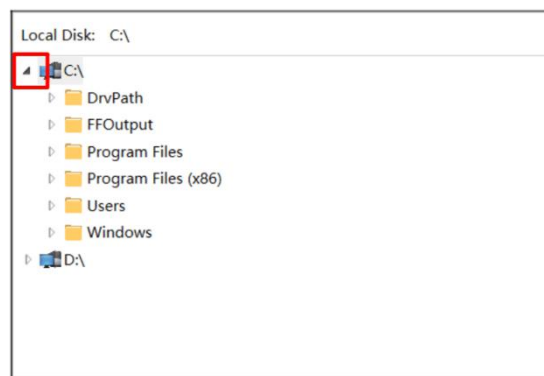
Rename groups and servers

Select the group or server, right-click to bring up the menu, then choose "Rename". Enter the new name to modify it; if no input is provided, no changes will be made.



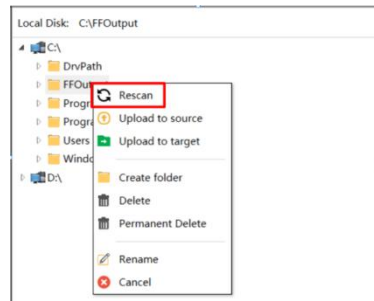
Expand disk

Click the disk expand icon to expand the disk.



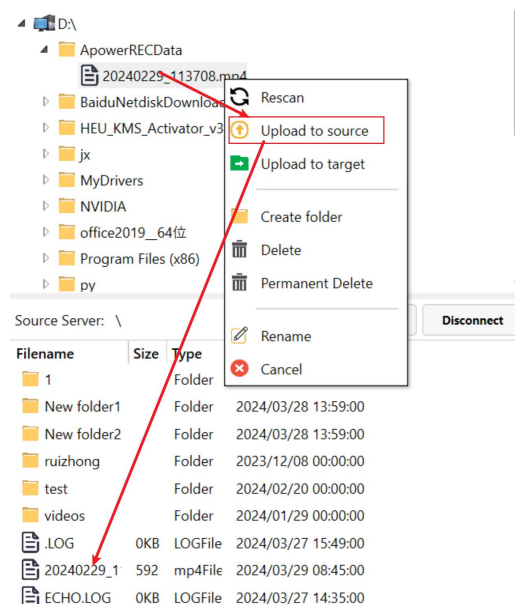
Rescan

After right-clicking in the local disk window to bring up the menu, select "Rescan" to refresh the disk and return it to its original state. This function is mainly used to recognize external USB drives or disks when inserted.

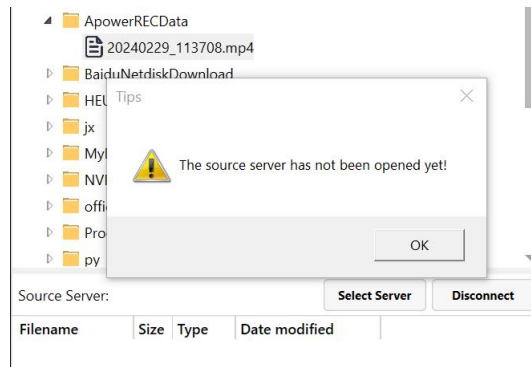


Upload to source

After selecting a local file, right-click to bring up the option to upload to the source server. Clicking "Upload to Source" will upload the locally selected file to the source server. During this process, there will be no transfer prompts.

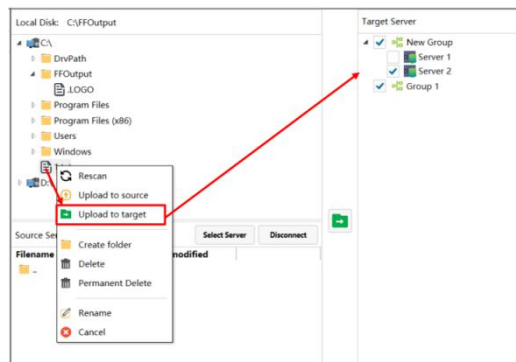


If the source server is not open when uploading to it, a prompt indicating that the source server is not open will appear.



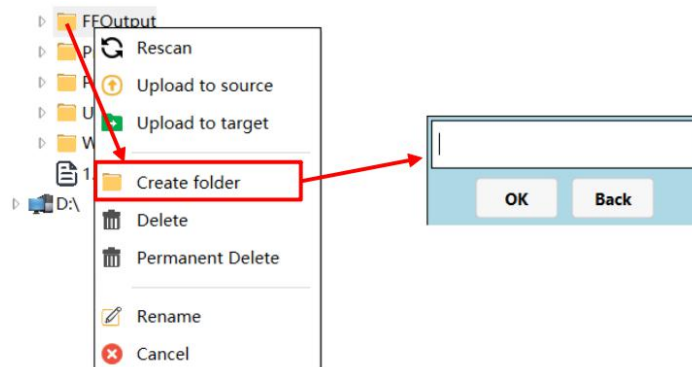
Upload to target

After selecting the file to upload, right-click to bring up the menu, then select "Upload to Target" to transfer the file to the selected target server (dragging and dropping cannot achieve this effect). (Tip: Before uploading, the checkbox for the target server must be checked.)



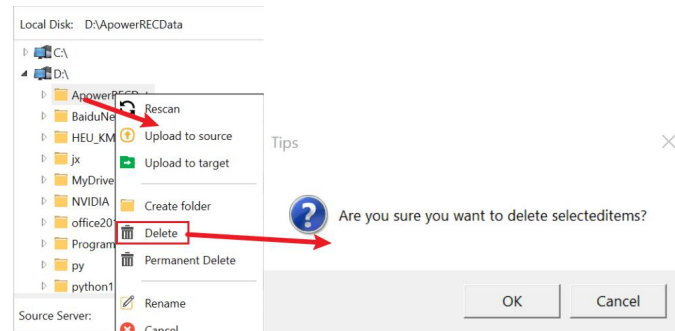
Create folder

After selecting a folder or file, right-click to bring up the menu, then choose "Create Folder". After entering the folder name, click "OK" to create the folder. If a folder is selected, the new folder will be created within that folder. If a file is selected, the new folder will be created within the folder where the file is located.



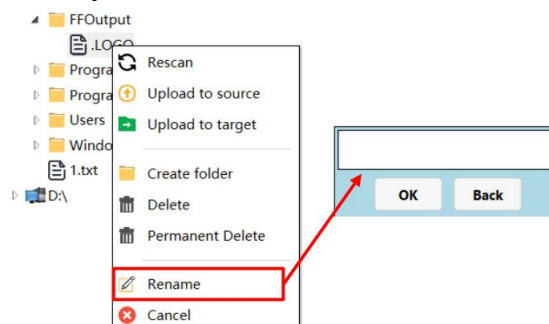
Delete folder

To delete a file or folder, select the file or folder, right-click to bring up the menu, then choose either the "Delete" or "Permanently Delete" option. "Delete" moves the file to the Recycle Bin, while "Permanently Delete" performs a permanent deletion similar to using Shift + Delete.



Rename file or folder

After selecting a file or folder, right-click to bring up the menu, then choose "Rename". Enter the new name to modify the file or folder name.



Source server operations

The source server is the currently open server. From this server, you can select files for transfer. It also supports downloading files from the source server to the local machine. The source server is a crucial component, enabling many-to-many transfers (multiple files to multiple servers) by selecting files for transfer from the opened server. Additionally, multiple selections of local files can also achieve many-to-many transfers. The detailed implementation is as follows:

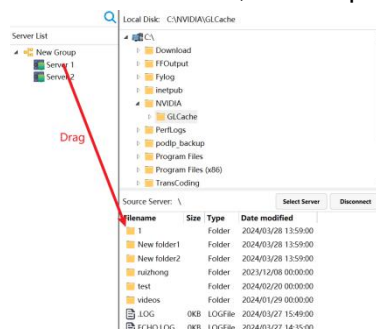
There are two ways to connect to the source server. The first method is to click the "Select Source Server" button located in the upper right corner of the source server interface. Upon clicking the button, a selection window will pop up. Double-click to select or connect to the server, and list the files in the source server window. The second method is to directly drag the server that needs to be connected from the server list to the source server window. The connection will be established once it is dropped.

Connect to the source server

1. Select the source server connection, and click "Select Server" in the pop-up window to make the selection.

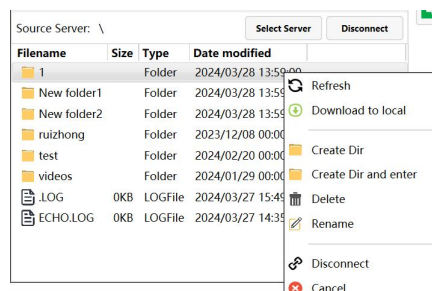


2. Drag the server connection, select the server you want to connect to in the server list on the left, drag it into the source server window, and drop it to connect directly.



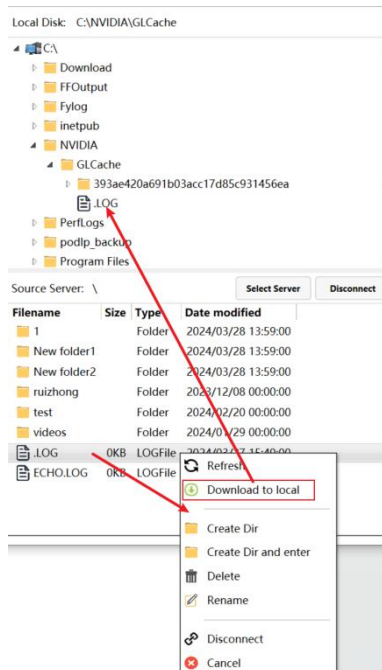
Refresh

- In the source server window, right-click to bring up the menu, then select the "Refresh" option to reconnect to the server.



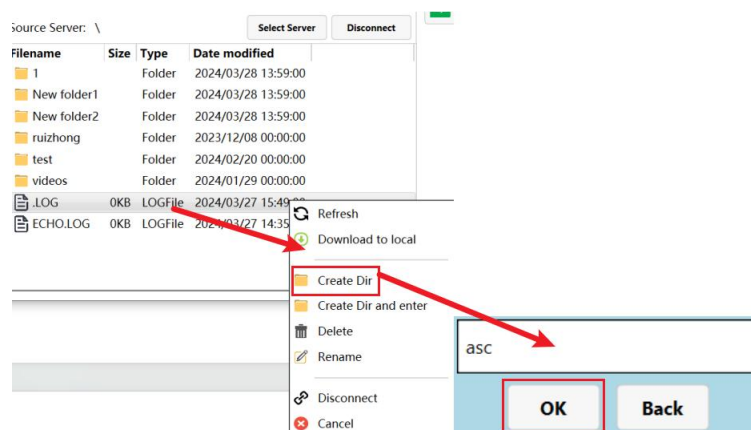
Download files to local

Select the file or folder from the source server, then right-click to bring up the menu and choose "Download to Local" to download it to the specified directory. It also supports dragging files to the local area to achieve downloading function (the download location is the currently opened directory).



Create folders

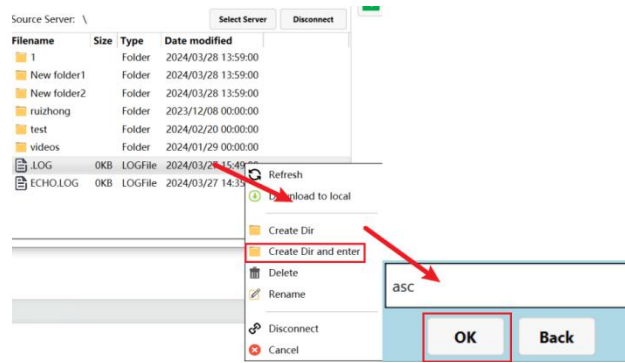
To create a folder, select "Create Dir" in the current directory, then input the folder name.



Create folder and enter

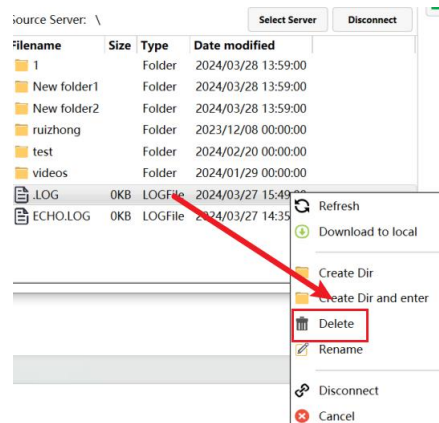
After creating a folder in the current directory, it will automatically enter the internal

directory.



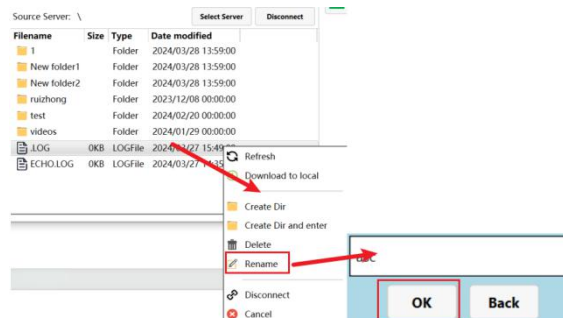
Delete files or folders

After selecting one or multiple files, right-click to bring up the menu and choose "Delete" to remove the selected items. When deleting a folder, ensure that there are no files or subfolders inside it. A confirmation prompt will appear after clicking "Delete" to confirm deletion.



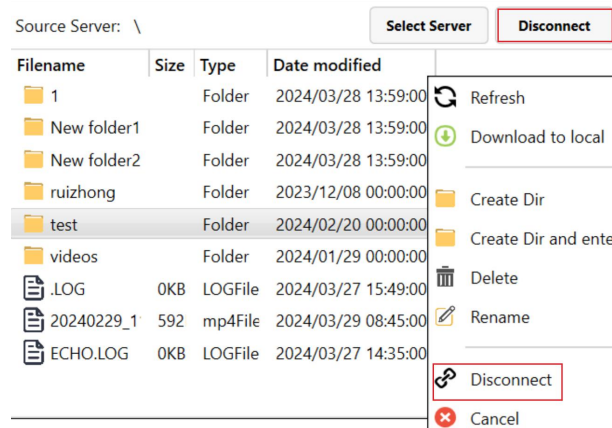
Rename files or folders

After selecting the file or folder whose name you want to change, right-click to bring up the menu and choose "Rename." Finally, input the new name.



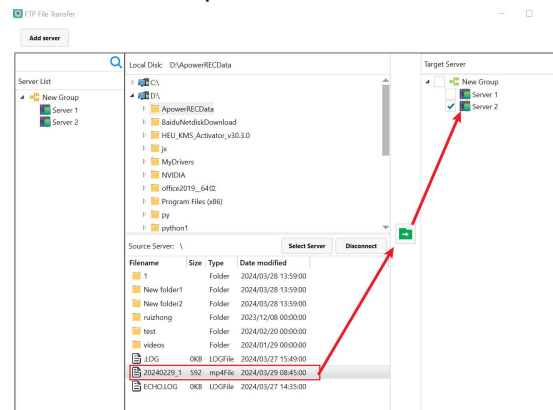
Disconnect

In the interface of the source server, right-click to bring up the menu and select "Disconnect" to disconnect the currently connected server and clear the files in the interface.

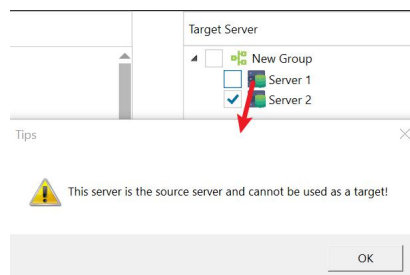


Target terminal operations

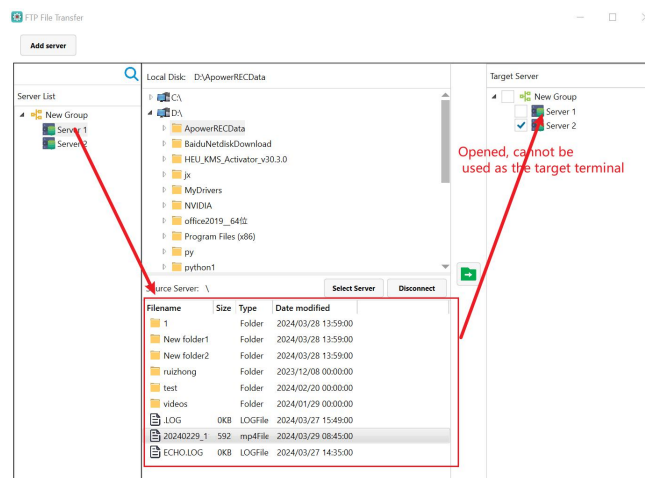
The target terminal refers to the destination where the local files and source server files are to be transferred. One or more target terminals can be selected. After selecting files from the source server, clicking the upload button will pop up the upload interface, enabling multiple file transfers to multiple servers.



Simply clicking on the target terminal allows for successful selection. To select all terminals, clicking on the group will select all terminals under that group. Once a terminal has been designated as a source server, it cannot be selected.

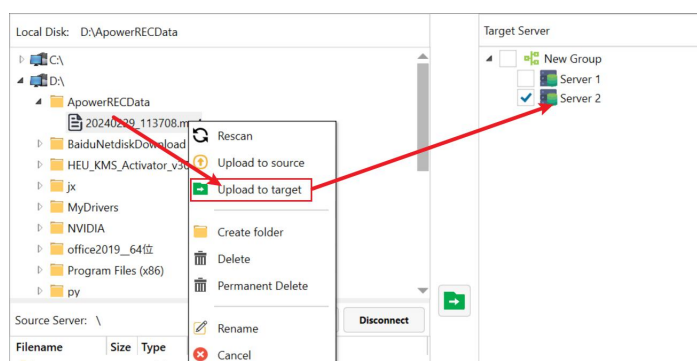


Check or click Group to select all terminals, but exclude open terminals, if you click again, it will pop up.

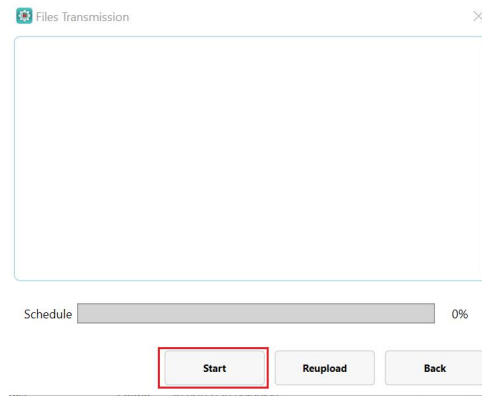


Transfer to target terminals

Transferring is a key feature of the FTP file distribution function, enabling multi-to-multi transfers between local and target terminals, as well as multi-to-multi transfers between source server files and target files. It can meet the demand for sending one or more files simultaneously to remote servers, and based on the advantages of the FTP transmission protocol, it can fulfill the need for large file transfers. To transfer local files to target terminals, expand the folder in the local window, select the files to be uploaded, right-click to bring up the menu, and select "Upload to Target" to open the transfer interface. It is important to ensure that there is at least one target terminal selected beforehand, otherwise a prompt will appear.

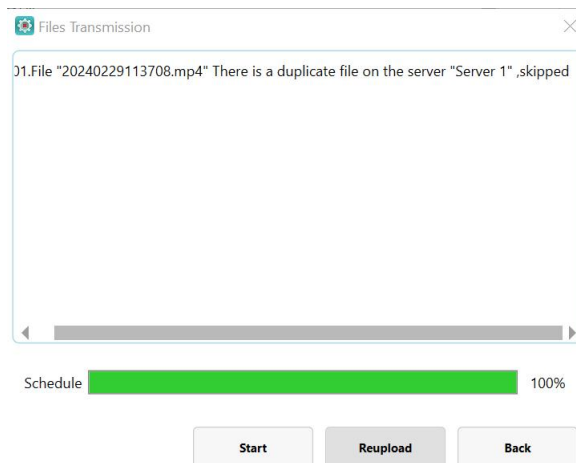


Click "Upload to Destination" to pop up the upload page, and click "Start Transfer" to transfer.

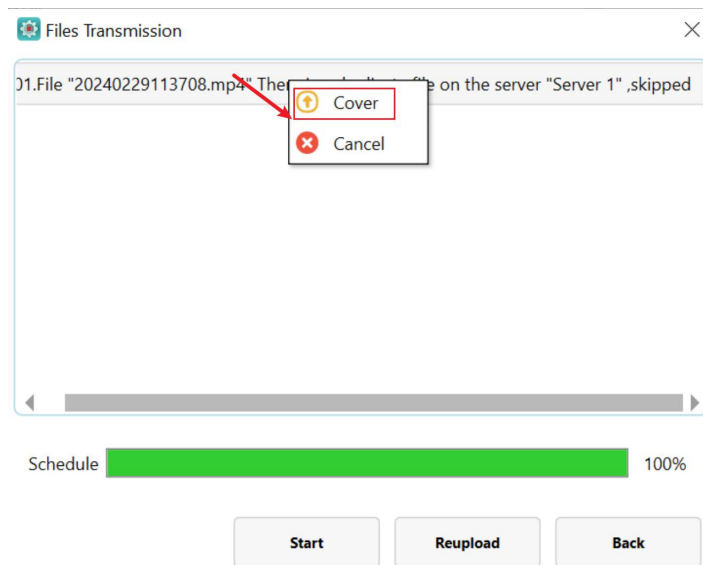


File Transfer: Skip Same Name

When a target terminal has a file with the same name and size as the one being transferred, it will be automatically skipped. However, users have the option to select the duplicate file and then right-click to choose "Cover" for transmission.

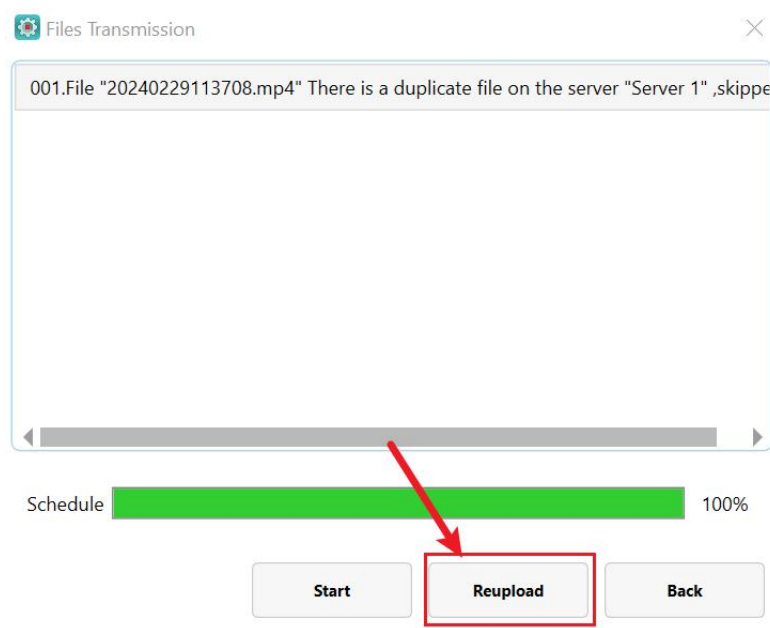


File transfer overwrites transfer after duplicate name.



Retry on failure

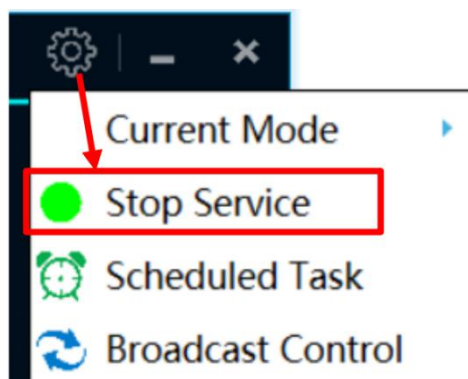
Upon encountering a failed file upload, you will receive a notification with the failure details. If any files fail to upload, clicking "Reupload" will attempt to transmit the failed files again, including resuming from where they left off. As file transfer failures are not easily reproducible, the effect will not be demonstrated. Simply click "Reupload" when encountered.



8. Other settings

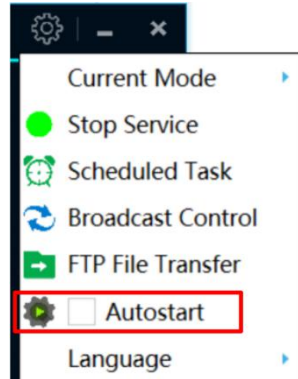
Stop service

Click on the "Settings" icon in the upper right corner of the page and then click on "Stop Service" to finish. After stopping the service, the phablet and other devices cannot be operated, and if you want to operate, you need to turn on the service.



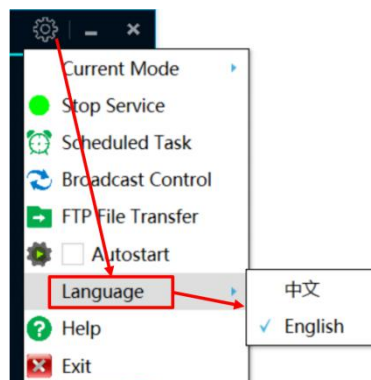
Autostart

Click the "Settings" icon in the upper right corner of the page, then tick the "Boot up" box. This will automatically start the software when the computer boots up.



Language selection

The central control system supports Chinese and English language formats, click the "Settings" icon in the upper right corner of the page, then click the language to complete the switch.



Help

Click the "Settings" icon in the upper right corner of the page, and then click "Help" to pop up the help page.

